

IC-PCR1500 IC-R1500 IC-PCR2500 IC-R2500

Firmware update information

Thank you for using the Icom Download Service.

The IC-PCR1500/2500 Ver. 2.01 firmware is now ready to update for the previous Ver. 2.00 or older firmware for IC-PCR1500, IC-R1500, IC-PCR2500 and IC-R2500. (**NOTE:** If your IC-PCR1500, IC-R1500, IC-PCR2500 or IC-R2500's Main unit firmware and control software version is 2.01 or later, this update is not necessary. See page 4 for version confirmation details.)

[Ver.2.01 Update] (This update covers [Ver.2.00 Update].)

This Ver.2.01 firmware update is to improve the basic performance for your IC-PCR1500, IC-R1500, IC-PCR2500 or IC-R2500 from Ver.2.00 firmware. Please note that no new functions have been added from Ver.2.00 firmware.

For control software operation

- Remote recording function (Improved)
- Priority scan function (Improved)

For remote controller operation

- Priority scan for IC-R2500's controller operation (Improved)
- In P25 mode operation (Improved)
- Standby beep function in DV mode operation (Improved)

[Ver.2.00 Update]

The following functions will be added and improved to your IC-PCR1500 or IC-R1500 when firmware updating is performed with Ver 2.00 firmware. (IC-PCR2500 or IC-R2500's Main unit firmware and control software version must be 2.00 or later.)

For control software operation

- The IC-PCR1500 series control software is combined with IC-PCR2500 series software. (New feature)
- Recording function— continuously records the receiving audio with a different file name when recording file capacity exceeds 2.0 GB. (New feature)
- Print preview function (New feature)
- Column width adjustment function for printing (New feature)
- Optimized USB audio output level and characteristics corresponding to AF volume control. (Improved)
- Accelerated file accessing/opening response for memory and multi-channel monitor file. (Improved)
- The date format of CSV file for band scope relates "Regional option" setting of the OS. (Improved)
- "AGC-F" indicator appearing and AGC button LED lighting condition has been changed. (Improved)
- Improvement for malfunction of memory channel file and multi-channel monitor file.

For remote controller operation

- Accelerated scan speed. (Improved)
- "Pop-up noise" is reduced during priority watch and WX alert. (Improved)
- Beep emission when cloning start, stop and error operation. (Improved)

IMPORTANT!: You undertake the updating of the firmware at your own risk and responsibility. Refer to the following steps for the correct procedures in updating the firmware.

■ Preparation

◇ Firmware and control software files

Before updating the firmware and control software, downloads and expands the following compressed files.

- Control software : CD-287901-007.zip
- Receiver's main unit firmware : Pcr1500_2500_firmup_v201.zip

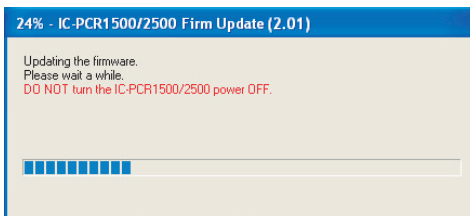
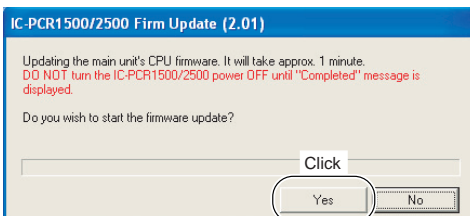
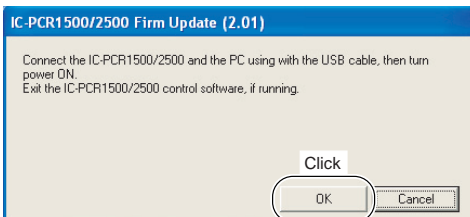
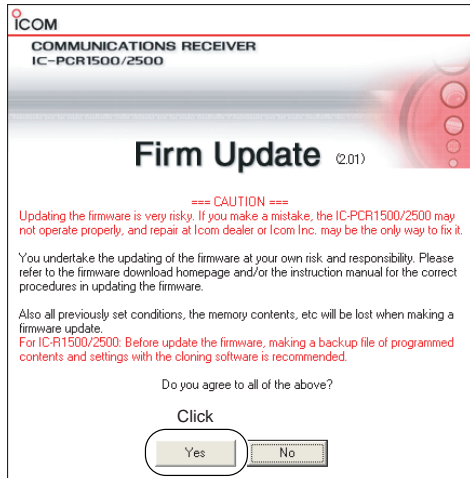
■ Updating

IMPORTANT!: You undertake the updating of the firmware at your own risk and responsibility. Refer to the following steps for the correct procedures in updating the firmware.

◇ Updating the Main unit firmware



PCR1500_2500_fu201.exe



- ① Quit all applications when Windows is running.
- ② Double-click the “PCR1500_2500_fu201.exe” file, contained in “Pcr1500_2500_firmup_v201” folder, to start up the IC-PCR1500/2500 Firmware Update.
 - The window as at left below appears.
- ③ Read the caution in the window carefully.
- ④ Click [Yes] if you agree and continue the firmware updating.

- ⑤ Connect the Main unit and the PC using the USB cable, and turning the Main unit ON. After that, click [OK].

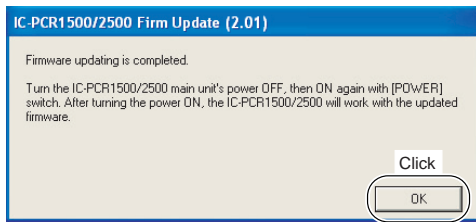
- ⑥ Click [Yes] to start the firmware update.

- ⑦ During updating, “Updating the firmware” window appears as at left.

⚠ **WARNING!:** NEVER turn the Main unit power OFF at this stage. The IC-PCR1500/2500 firmware will be damaged. If the firmware file is damaged, the receiver unit can only be repaired at Icom service center or authorized technical dealer.

☞ Continue to the next page

◇ Updating the Main unit firmware— continued



- ⑧ After the firmware updating, “Firmware updating is completed” window appears as at left. Click [OK].
 - When “Firmware updating failed” message appears, turn the Main unit OFF, then ON again and retry the updating procedure from step ①.
- ⑨ Turn the Main unit power OFF, then ON again.
 - The firmware updating is completed. The IC-PCR1500, IC-R1500, IC-PCR2500 or IC-R2500 will work with the updated firmware.

◇ Updating the control software

- ① Move or make a backup of the preset file, “preset_e.mch*” (or “preset_e2.mch*,” “preset_e3.mch*”), stored in the IC-PCR1500 (or IC-PCR1500_2500) folder into the desired location, such as “My Document.”
- ② Uninstall the current IC-PCR1500 (or IC-PCR1500_2500) program.
 - See the IC-PCR1500/IC-PCR2500 instruction manual for uninstallation details. (Sec. 3; ■ Uninstallation)
- ③ Double click “Setup.exe” file in “Pcr1500_2500” folder.
 - “Pcr1500_2500” folder is contained in “CD-287901-007” folder.
- ④ Install the updated control software.
 - See the IC-PCR1500/IC-PCR2500 instruction manual for installation details. (Sec. 3; ■ Installation)
- ⑤ Move or copy the preset file, “preset_e.mch*” (or “preset_e2.mch*,” “preset_e3.mch*”), that is moved or backup in step ① into “IC-PCR1500_2500” folder.
- ⑥ Start up “IC-PCR1500_2500” program.
- ⑦ Open memory list screen.
- ⑧ Open the “preset_e.mch*” (or “preset_e2.mch*,” “preset_e3.mch*”) file from the file menu.

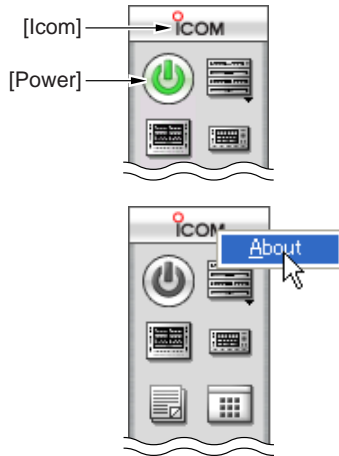
****Why the previous “preset_e.mch” (or “preset_e2.mch,” “preset_e3.mch”) file is needed?***

All previously set conditions, such as the memory contents, are stored into “preset_e.mch” (or “preset_e2.mch,” “preset_e3.mch”) file, if you have not save the set conditions with a different file name. The “preset_e.mch” (or “preset_e2.mch,” “preset_e3.mch”) file (initializing file) will be deleted at the same time when the control software uninstallation is performed— all memory data is lost after the control software updating if the steps ① and/or ⑤ is/are skipped.

◇ Main unit firmware and control software version confirmation

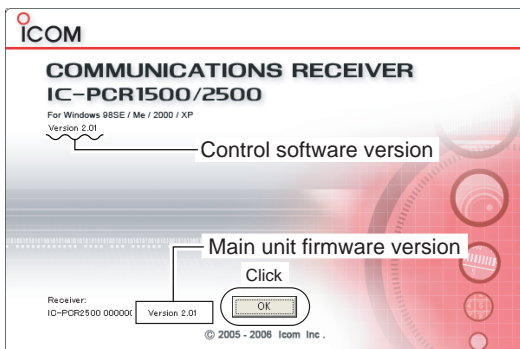
The firmware version of IC-PCR1500, IC-R1500, IC-PCR2500 or IC-R2500's Main unit and control software can be confirmed with the following instructions.

- ① Before launching the program, make sure the Main unit is powered ON.
 - The power indicator lights green.
- ② Launch the "IC-PCR1500_2500" program.
- ③ Click the [Power] icon on the tool bar to connect the control software and Main unit.



- ④ Right-click the [Icom], then click [About].

<Example>



- ⑤ Confirm the Main unit firmware and control software version with the displayed screen as at left.
 - "Version 2.01" is displayed for each indication if the updating is succeeded.

NOTE: When the IC-PCR1500/2500 control software version is 1.00 or 1.01, the Main unit version information is not displayed.

- ⑥ Click [OK].